

## *Portable Gantry Cranes*

BHS Gantry Cranes provide safe and efficient vertical extraction for most standard lift truck batteries by utilizing vertical space. The crane lifts the forklift battery and provides the operator with full control, minimizing muscle strain while providing enhanced productivity. In some environments, gantries can also allow for better utilization of floor space.

While BHS gantries are designed to handle forklift batteries, they are suitable for a wide variety of applications. To choose an appropriate model for your facility, you should carefully consider capacity, beam length, and clearance, among several other options offered by BHS.



***Ask about custom battery handling equipment for your unique application.***

Contact BHS at [bhs@bhs1.com](mailto:bhs@bhs1.com) to learn more about fully customized solutions for the battery room.

# Power Drive Gantry Crane

Power Drive Gantry Cranes (PGC-PDC) are available in 2 ton and 3 ton (4,000 lb / 1814 kg and 6,000 lb / 2722 kg) capacity models. These powered gantry cranes provide smooth transitions thanks to variable frequency drive technology, allowing for safe and productive use in various applications.

These all-electric gantry crane systems from BHS improve battery change-outs in overhead-extraction applications. They're available in a variety of heights, spans, and weight capacities to match any forklift battery fleet. Even the heaviest-duty Power Drive Gantry Cranes are designed for steady travel up and down the line. Meanwhile, a Cable Festoon Kit keeps all cables secure and out of the travel path during movement.

Gantry crane systems from BHS are modular, so they can be easily expanded or reduced as the needs of the fleet change over time.

## FEATURES & BENEFITS

- Provide for a safe and easy vertical extraction for most standard lift truck batteries
- Modular design allows for easy system expansion
- A variety of standard heights, beam spans, and capacities are available for specific applications
- For acceleration/deceleration of the gantry, the latest variable frequency drive technology provides smooth transitions
- High 10' 5" (3.2 m) under beam clearance is standard on all units
- Cable Festoon Kit keeps cables secure during operation of motorized trolley



PGC-PDC System



## SAFE, EFFICIENT VERTICAL EXTRACTION

A-frame Gantry Cranes designed specifically for the unique working traits of forklift batteries offer the safest and most efficient way to vertically remove forklift batteries from trucks.



## SINGLE-WORKER BATTERY CHANGES

Gantry crane systems allow a single operator to park the truck in the designated area and safely remove a forklift's battery and replace it with a recharged one.

## OPTIONS & REQUIRED ACCESSORIES

### MOUNTING - WHEEL/TRACK

Power Drive Gantry Cranes come standard with V-Groove Track and compatible wheels. Please see below for alternate options. Track Length must be specified when ordering and is sold by the foot.



#### Poly Wheel Drive (PGC-POLY)

10" x 3" Polyurethane wheel drive available for powered gantry cranes utilizing single or dual sided guidance 4" (102 mm) C-channel track



#### Single Guidance Track, 4" C-Channel (SGT-C4)

4" (102 mm) C-channel designed for Power Drive Gantry Cranes that utilize the Poly Wheel Drive option



#### Dual Guidance Track, 4" C-Channel (DGT-C4)

4" (102 mm) C-channel track, dual sided design, for Power Drive Gantry Cranes that utilize the Poly Wheel Drive option



#### Dual Guidance Track, V-Groove (DGT-V)

Standard V-groove track is available for Power Drive and Non-Power Drive Gantry Cranes on a per foot basis, comes in two sections, and V-groove compatible wheels come standard when DGT-V is used



#### Floor Mount (PGC-FM)

Allows for rigid mounting of gantry directly to the floor

### TRACK END STOPS (Required)



#### Track End Stop (TRK-ES)

Steel stops prevent system from running off guidance track



#### Track End Stop with Rubber Bumper (TRK-ES-RB)

Steel stops with rubber bumpers prevent system from running off guidance track

### POWER CABLE REEL



#### Power Cable Reel (PCR-50)

50' (15.24 m) permanent tension mounted cable reel keeps the electrical cord taut and secure during operation



#### Power Cable Reel (PCR-85)

85' (25.91 m) permanent tension mounted cable reel keeps the electrical cord taut and secure during operation



#### Universal Hinge Mount (PCR-UHM)

Wall mounted power cable reel base traverses left to right



#### Pivot Base (PCR-PVB)

Ceiling mounted power cable reel base provides increased range of motion

\* Requires three phase power (240/480 V ac)

### HOISTS



#### Electric Hoist & Motorized Trolley Kit (2B)\*

2 ton capacity electric chain hoist with motorized trolley, chain container, and 3 Phase six button pendant  
Note: Kit is required for PGC-PDC models



#### Electric Hoist & Motorized Trolley Kit (3B)\*

3 ton capacity electric chain hoist with motorized trolley, chain container, and 3 Phase six button pendant  
Note: Kit is required for 3PGC-PDC models

### BATTERY LIFTING BEAMS

For more details on the various Battery Lifting Beams listed below, refer to "PL-2900 Forklift Battery Lifting Devices" literature.



#### Battery Lifting Beam (BLB-6000)

Hardwood constructed beam has a 6,000 lb (2722 kg) capacity with 27.5" to 42.5" (699 mm to 1080 mm) adjustable clear span



#### Battery Lifting Beam (BLB-6000-48)

Hardwood constructed beam has a 6,000 lb (2722 kg) capacity with 35.5" to 50.5" (902 mm to 1283 mm) adjustable clear span



#### Load Hog Battery Lifting Beam (BLB-6000-LHG) or Super Hog Battery Lifting Beam (BLB-6000-SHG)

Separate options consist of the BLB-6000 with either Load Hog Hooks or Super Hog Hooks designed for Load Hog and Super Load Hog batteries



#### Load-Lok Battery Lifting Beam (BLB-6000-LLH)

Standard BLB-6000 with Load-Lok hooks



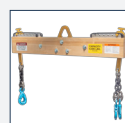
#### Slide Latch Battery Lifting Beam (BLB-6000-SLD)

Standard BLB-6000 with Slide Latch hooks



#### Battery Lifting Beam—Four Point (BLB-4PT)

Hardwood constructed beam has a 6,000 lb (2722 kg) capacity with 25.5" to 40.5" (648 mm to 1029 mm) adjustable clear span and four hooks for multi-point lifting



#### Battery Lifting Beam—Four Point (BLB-4PT48)

Hardwood constructed beam has a 6,000 lb (2722 kg) capacity with 32.5" to 47.5" (825 mm to 1206 mm) adjustable clear span and four hooks for multi-point lifting

### ADDITIONAL OPTIONS



#### 8 Button Pendant Control (PGC-8PEND)

Remote pendant contains eight buttons for multi-directional control and disconnection of system power from one central location



#### 12 Foot Under Beam Clearance (PGC-12UB)

For applications requiring 12' (3.7 m) under beam clearance

# Non-Power Drive Gantry Crane

Change forklift batteries in vertical-extraction fleets with a Non-Power Drive Gantry Crane (PGC) from BHS. These powder-coated, all-steel gantry cranes are available with 2 ton or 3 ton (4,000 lb / 1814 kg or 6,000 lb / 2722 kg) capacities to match virtually any battery fleet.

Manually push the PGC along the optional Single Guidance Track for floor travel, or choose the Floor Mount option, which creates a permanent, highly stable Gantry Crane wherever you see fit.

Non-Power Drive Gantry Crane systems feature a modular design for potential expansion.

## FEATURES & BENEFITS

- Provide for a safe and easy vertical extraction for most standard lift truck batteries
- Modular design allows for easy system expansion
- A variety of beam spans and capacities are available for specific applications
- Large swivel casters are standard to allow for easy mobility of the entire gantry crane
- High 10' (3 m) under beam clearance is standard on all units
- Cable Festoon Kit keeps cables secure during operation of manual trolley



## COMPLETE BATTERY CHANGING SYSTEM

Hardwood Battery Stations, Battery Wash Equipment, and Safety Equipment are available to create a complete Portable Gantry Crane system for forklift battery storage, charging, and maintenance. Contact a BHS Representative for more details.

## OPTIONS & REQUIRED ACCESSORIES

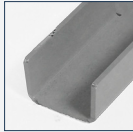
### MOUNTING - WHEEL/TRACK

Non-Power Drive Gantry Cranes come standard with swivel casters and floor locks for use without a track. Please see below for alternate options. Track length must be specified when ordering and is sold by the foot.



#### Phenolic Caster (PGC-PHEN)

8" x 2.5" Rigid phenolic casters for use with Single Guidance Track (SGT-C3)



#### Single Guidance Track, 3" C-Channel (SGT-C3)

3" (76 mm) C-channel designed for use with phenolic caster option on Non-Power Drive Gantry Cranes



#### Dual Guidance Track, V-Groove (DGT-V)

Standard V-groove track is available for Power Drive and Non-Power Drive Gantry Cranes on a per foot basis, comes in two sections, and V-groove compatible wheels come standard when DGT-V is used



#### Floor Mount (PGC-FM)

Allows for rigid mounting of gantry directly to the floor

### TRACK END STOPS

If Gantry is track-mounted, track end stops will be required.



#### Track End Stop (TRK-ES)

Steel stops prevent system from running off guidance track



#### Track End Stop with Rubber Bumper (TRK-ES-RB)

Steel stops with rubber bumpers prevent system from running off guidance track

### HOISTS



#### Electric Hoist & Manual Ball Trolley Kits (2A-1)\*

2 ton capacity electric chain hoist with a manual trolley, chain container, and a 1 Phase two button pendant



#### Electric Hoist & Manual Ball Trolley Kits (2A-3)\*\*

2 ton capacity electric chain hoist with a manual trolley, chain container, and a 3 Phase two button pendant



#### Electric Hoist & Manual Ball Trolley Kit (3A)\*\*

3 ton capacity electric chain hoist with manual trolley, chain container, and a 3 Phase two button pendant

\* Requires single phase power (120/240 V ac)

\*\* Requires three phase power (240/480 V ac)

### BATTERY LIFTING BEAMS

For more details on the various Battery Lifting Beams listed below, refer to "PL-2900 Forklift Battery Lifting Devices" literature.



#### Battery Lifting Beam (BLB-6000)

Hardwood constructed beam has a 6,000 lb (2722 kg) capacity with 27.5" to 42.5" (699 mm to 1080 mm) adjustable clear span



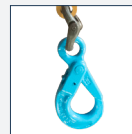
#### Battery Lifting Beam (BLB-6000-48)

Hardwood constructed beam has a 6,000 lb (2722 kg) capacity with 35.5" to 50.5" (902 mm to 1283 mm) adjustable clear span



#### Load Hog Battery Lifting Beam (BLB-6000-LHG) or Super Hog Battery Lifting Beam (BLB-6000-SHG)

Separate options consist of the BLB-6000 with either Load Hog Hooks or Super Hog Hooks designed for Load Hog and Super Load Hog batteries



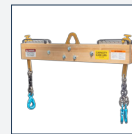
#### Load-Lok Battery Lifting Beam (BLB-6000-LLH)

Standard BLB-6000 with Load-Lok hooks



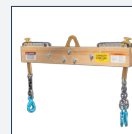
#### Slide Latch Battery Lifting Beam (BLB-6000-SLD)

Standard BLB-6000 with Slide Latch hooks



#### Battery Lifting Beam-Four Point (BLB-4PT)

Hardwood constructed beam has a 6,000 lb (2722 kg) capacity with 25.5" to 40.5" (648 mm to 1029 mm) adjustable clear span and four hooks for multi-point lifting



#### Battery Lifting Beam-Four Point (BLB-4PT48)

Hardwood constructed beam has a 6,000 lb (2722 kg) capacity with 32.5" to 47.5" (825 mm to 1206 mm) adjustable clear span and four hooks for multi-point lifting

### ADDITIONAL OPTIONS



#### 12 Foot Under Beam Clearance (PGC-12UB)

For applications requiring 12' (3.7 m) under beam clearance

## Power Drive Gantry Crane—2 Ton Capacity

### MODELS & SPECIFICATIONS

	PGC-10PDC	PGC-12PDC	PGC-14PDC	PGC-16PDC	PGC-18PDC	PGC-20PDC
<b>Capacity</b>	4,000 lb / 1814 kg	4,000 lb / 1814 kg	4,000 lb / 1814 kg	4,000 lb / 1814 kg	4,000 lb / 1814 kg	4,000 lb / 1814 kg
<b>Clear Between "A" Frame</b>	10' / 3048 mm	12' / 3658 mm	14' / 4267 mm	16' / 4877 mm	18' / 5486 mm	20' / 6096 mm
<b>Overall Beam Length</b>	12' / 3658 mm	14' / 4267 mm	16' / 4877 mm	18' / 5486 mm	20' / 6096 mm	22' / 6706 mm
<b>Overall Length Dimension</b>	12' 9" / 3886 mm	14' 9" / 4496 mm	16' 9" / 5105 mm	18' 9" / 5715 mm	20' 9" / 6325 mm	22' 9" / 6934 mm
<b>Overall System Length <sup>1</sup></b>	14' / 4267 mm	16' / 4877 mm	18' / 5486 mm	20' / 6096 mm	22' / 6706 mm	24' / 7315 mm
<b>Nominal Track / Wheel Distance <sup>2</sup></b>	11' 5" / 3480 mm	13' 5" / 4089 mm	15' 5" / 4699 mm	17' 5" / 5309 mm	19' 5" / 5918 mm	21' 5" / 6528 mm
<b>Overall Height <sup>3</sup></b>	11' 1" / 3378 mm	11' 1" / 3378 mm	11' 3" / 3429 mm	11' 3" / 3429 mm	11' 5" / 3480 mm	11' 5" / 3480 mm
<b>I-Beam Size</b>	8" x 23 lb / 203 mm x 10.43 kg	8" x 23 lb / 203 mm x 10.43 kg	10" x 25.4 lb / 254 mm x 11.52 kg	10" x 25.4 lb / 254 mm x 11.52 kg	12" x 31.8 lb / 305 mm x 14.42 kg	12" x 31.8 lb / 305 mm x 14.42 kg
<b>Weight</b>	1,260 lb / 572 kg	1,285 lb / 583 kg	1,320 lb / 599 kg	1,345 lb / 610 kg	1,425 lb / 646 kg	1,490 lb / 676 kg
<b>Under Beam Clearance Height</b>	10' 5" / 3175 mm	10' 5" / 3175 mm	10' 5" / 3175 mm	10' 5" / 3175 mm	10' 5" / 3175 mm	10' 5" / 3175 mm
<b>Under Chain Container Clearance Height</b>	8' 5" / 2565 mm	8' 5" / 2565 mm	8' 5" / 2565 mm	8' 5" / 2565 mm	8' 5" / 2565 mm	8' 5" / 2565 mm
<b>Max A.C. Amp Draw with Hoist at 480 V / 3 ph / 60 Hz<sup>4</sup></b>	5.2 Amp	5.2 Amp	5.2 Amp	5.2 Amp	5.2 Amp	5.2 Amp
<b>Travel Speed</b>	45 ft/min / 0.23 m/s	45 ft/min / 0.23 m/s	45 ft/min / 0.23 m/s	45 ft/min / 0.23 m/s	45 ft/min / 0.23 m/s	45 ft/min / 0.23 m/s
<b>A-Frame Base Width</b>	68" / 1727 mm	68" / 1727 mm	68" / 1727 mm	68" / 1727 mm	68" / 1727 mm	68" / 1727 mm

## Power Drive Gantry Crane—3 Ton Capacity

### MODELS & SPECIFICATIONS

	3PGC-10PDC	3PGC-12PDC	3PGC-14PDC	3PGC-16PDC	3PGC-18PDC	3PGC-20PDC
<b>Capacity</b>	6,000 lb / 2722 kg	6,000 lb / 2722 kg	6,000 lb / 2722 kg	6,000 lb / 2722 kg	6,000 lb / 2722 kg	6,000 lb / 2722 kg
<b>Clear Between "A" Frame</b>	10' / 3048 mm	12' / 3658 mm	14' / 4267 mm	16' / 4877 mm	18' / 5490 mm	20' / 6100 mm
<b>Overall Beam Length</b>	12' / 3658 mm	14' / 4267 mm	16' / 4877 mm	18' / 5486 mm	20' / 6100 mm	22' / 6710 mm
<b>Overall Length Dimension</b>	12' 9" / 3886 mm	14' 9" / 4496 mm	16' 9" / 5105 mm	18' 9" / 5715 mm	20' 9" / 6325 mm	22' 9" / 6934 mm
<b>Overall System Length <sup>1</sup></b>	14' / 4267 mm	16' / 4877 mm	18' / 5486 mm	20' / 6096 mm	22' / 6706 mm	24' / 7315 mm
<b>Nominal Track / Wheel Distance <sup>2</sup></b>	11' 5" / 3480 mm	13' 5" / 4089 mm	15' 5" / 4699 mm	17' 5" / 5309 mm	19' 5" / 5918 mm	21' 5" / 6528 mm
<b>Overall Height <sup>3</sup></b>	11' 1" / 3378 mm	11' 3" / 3429 mm	11' 3" / 3429 mm	11' 5" / 3480 mm	11' 8" / 3556 mm	11' 8" / 3556 mm
<b>I-Beam Size</b>	8" x 23 lb / 203 mm x 10.43 kg	10" x 25.4 lb / 254 mm x 11.52 kg	10" x 25.4 lb / 254 mm x 11.52 kg	12" x 31.8 lb / 305 mm x 14.42 kg	15" x 42.9 lb / 381 mm x 19.46 kg	15" x 42.9 lb / 381 mm x 19.46 kg
<b>Weight</b>	1,260 lb / 572 kg	1,320 lb / 599 kg	1,370 lb / 621 kg	1,455 lb / 660 kg	1,511 lb / 685 kg	1,627 lb / 738 kg
<b>Under Beam Clearance Height</b>	10' 5" / 3175 mm	10' 5" / 3175 mm	10' 5" / 3175 mm	10' 5" / 3175 mm	10' 5" / 3175 mm	10' 5" / 3175 mm
<b>Under Chain Container Clearance Height</b>	8' 5" / 2565 mm	8' 5" / 2565 mm	8' 5" / 2565 mm	8' 5" / 2565 mm	8' 5" / 2565 mm	8' 5" / 2565 mm
<b>Max A.C. Amp Draw with Hoist at 480 V / 3 ph / 60 Hz<sup>4</sup></b>	6.8 Amp	6.8 Amp	6.8 Amp	6.8 Amp	6.8 Amp	6.8 Amp
<b>Travel Speed</b>	45 ft/min / 0.23 m/s	45 ft/min / 0.23 m/s	45 ft/min / 0.23 m/s	45 ft/min / 0.23 m/s	45 ft/min / 0.23 m/s	45 ft/min / 0.23 m/s
<b>A-Frame Base Width</b>	68" / 1727 mm	68" / 1727 mm	68" / 1727 mm	68" / 1727 mm	68" / 1727 mm	68" / 1727 mm

Notes:

1. 12" (305 mm) Clearance recommended on each side
2. Dimension should not be used for track installation due to varying crown of I-beams
3. Dimension does not include cable festoon
4. Consult factory for additional voltage and 50 Hz

## Non-Power Drive Gantry Crane-2 Ton Capacity

### MODELS & SPECIFICATIONS

	PGC-10	PGC-12	PGC-14	PGC-16	PGC-18
<b>Capacity</b>	4,000 lb / 1814 kg	4,000 lb / 1814 kg	4,000 lb / 1814 kg	4,000 lb / 1814 kg	4,000 lb / 1814 kg
<b>Clear Between "A" Frame</b>	10' / 3048 mm	12' / 3658 mm	14' / 4267 mm	16' / 4877 mm	18' / 5486 mm
<b>Overall Beam Length</b>	12' / 3658 mm	14' / 4267 mm	16' / 4877 mm	18' / 5486 mm	20' / 6096 mm
<b>Overall Length Dimension</b>	12' / 3658 mm	14' / 4267 mm	16' / 4877 mm	18' / 5486 mm	20' / 6096 mm
<b>Overall System Length<sup>1</sup></b>	14' / 4267 mm	16' / 4877 mm	18' / 5486 mm	20' / 6096 mm	22' / 6706 mm
<b>Nominal Track / Wheel Distance<sup>2</sup></b>	11' 5" / 3480 mm	13' 5" / 4089 mm	15' 5" / 4699 mm	17' 5" / 5309 mm	19' 5" / 5918 mm
<b>Overall Height</b>	10' 9" / 3277 mm	10' 9" / 3277 mm	10' 11" / 3327 mm	10' 11" / 3327 mm	11' 1" / 3378 mm
<b>I-Beam Size</b>	8" x 23 lb / 203 mm x 10.43 kg	8" x 23 lb / 203 mm x 10.43 kg	10" x 25.4 lb / 254 mm x 11.52 kg	10" x 25.4 lb / 254 mm x 11.52 kg	12" x 31.8 lb / 305 mm x 14.42 kg
<b>Weight</b>	850 lb / 386 kg	890 lb / 404 kg	940 lb / 426 kg	995 lb / 451 kg	1225 lb / 556 kg
<b>Under Beam Clearance Height</b>	10' 1" / 3073 mm	10' 1" / 3073 mm	10' 1" / 3073 mm	10' 1" / 3073 mm	10' 1" / 3073 mm
<b>A-Frame Base Width</b>	64" / 1626 mm	64" / 1626 mm	64" / 1626 mm	64" / 1626 mm	64" / 1626 mm

## Non-Power Drive Gantry Crane-3 Ton Capacity

### MODELS & SPECIFICATIONS

	3PGC-10	3PGC-12	3PGC-14	3PGC-16	3PGC-18
<b>Capacity</b>	6,000 lb / 2722 kg	6,000 lb / 2722 kg	6,000 lb / 2722 kg	6,000 lb / 2722 kg	6,000 lb / 2722 kg
<b>Clear Between "A" Frame</b>	10' / 3048 mm	12' / 3658 mm	14' / 4267 mm	16' / 4877 mm	18' / 5486 mm
<b>Overall Beam Length</b>	12' / 3658 mm	14' / 4267 mm	16' / 4877 mm	18' / 5486 mm	20' / 6096 mm
<b>Overall Length Dimension</b>	12' / 3658 mm	14' / 4267 mm	16' / 4877 mm	18' / 5486 mm	20' / 6096 mm
<b>Overall System Length<sup>1</sup></b>	14' / 4267 mm	16' / 4877 mm	18' / 5486 mm	20' / 6096 mm	22' / 6706 mm
<b>Nominal Track / Wheel Distance<sup>2</sup></b>	11' 5" / 3480 mm	13' 5" / 4089 mm	15' 5" / 4699 mm	17' 5" / 5309 mm	19' 5" / 5918 mm
<b>Overall Height</b>	10' 9" / 3277 mm	10' 11" / 3327 mm	10' 11" / 3327 mm	11' 1" / 3378 mm	11' 4" / 3454 mm
<b>I-Beam Size</b>	8" x 23 lb / 203 mm x 10.43 kg	10" x 25.4 lb / 254 mm x 11.52 kg	10" x 25.4 lb / 254 mm x 11.52 kg	12" x 31.8 lb / 305 mm x 14.42 kg	15" x 42.9 lb / 381 mm x 19.46 kg
<b>Weight</b>	900 lb / 408 kg	950 lb / 431 kg	1,000 lb / 454 kg	1,110 lb / 503 kg	1,305 lb / 592 kg
<b>Under Beam Clearance Height</b>	10' 5" / 3175 mm	10' 5" / 3175 mm	10' 5" / 3175 mm	10' 5" / 3175 mm	10' 5" / 3175 mm
<b>A-Frame Base Width</b>	68" / 1727 mm	68" / 1727 mm	68" / 1727 mm	68" / 1727 mm	68" / 1727 mm

Notes:

- 12" (305 mm) Minimum clearance recommended on each side
- Dimension should not be used for track installation due to varying crown of I-beams



**NORTH AMERICA:** P.O. Box 28990, St. Louis, MO 63132 USA • 1.800.BHS.9500 • Fax: 314.423.6444 • sales@bhs1.com • BHS1.com

**INTERNATIONAL:** P.O. Box 12429, St. Louis, MO 63132 USA • +1 314 423 2075 • Fax: +1 314 423 3034 • sales@bhs1global.com

Specifications are subject to change without notice. ©2008–2019 BHS, Inc. St. Louis, MO. Data Sheet: PL-2700 09/19

